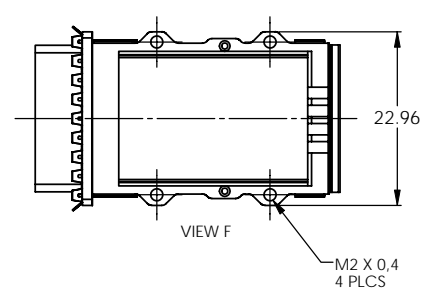
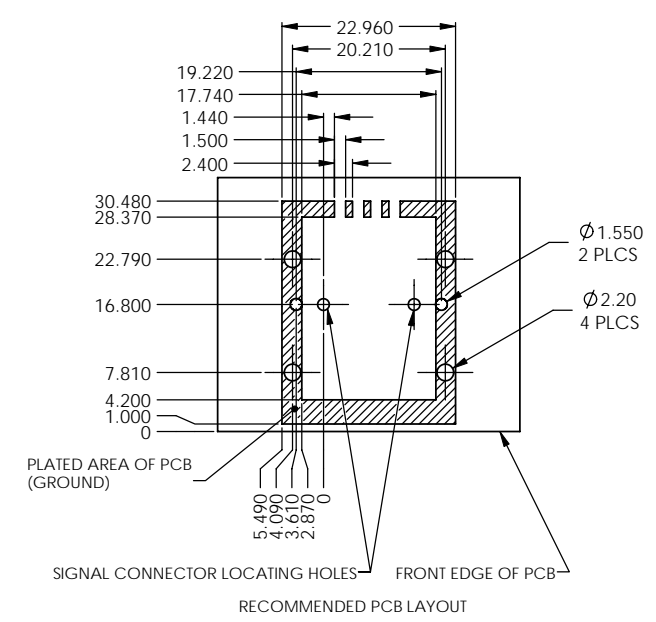
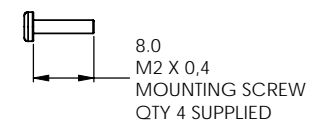
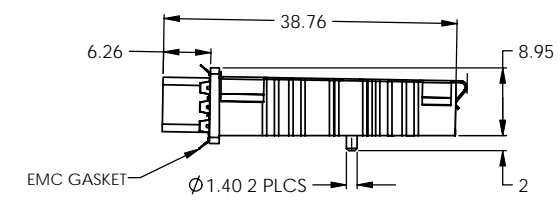
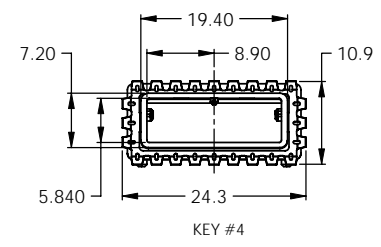
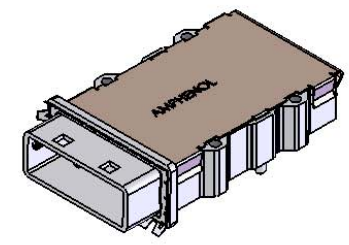
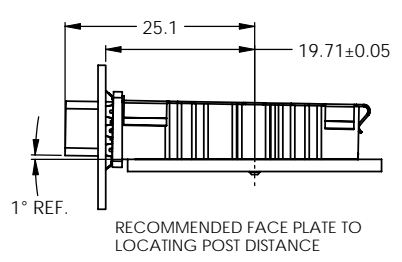
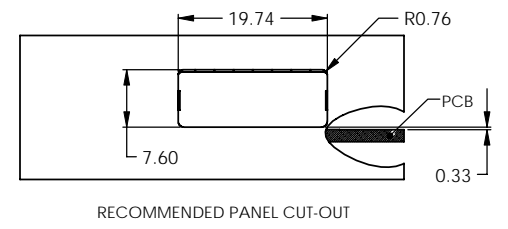
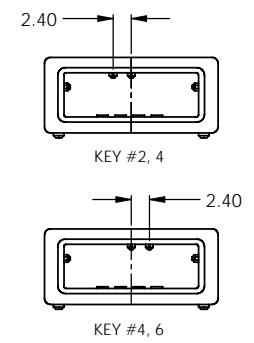
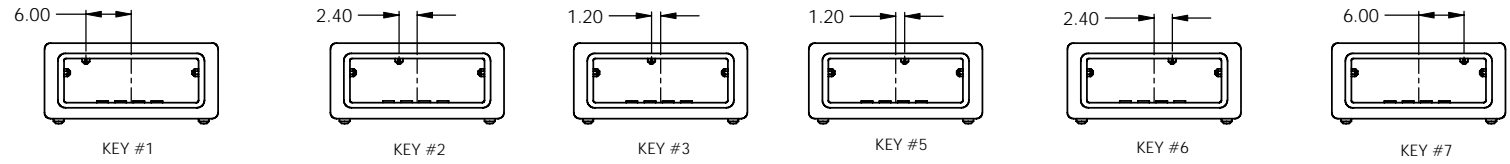


REVISIONS				
REV	ECN	DESCRIPTION	DATE	APPROVED
R		B840 TOLERANCE CORRECTED	MAR 13/08	JLJ
S		CAGE COVER MATERIAL CHANGE	JAN 02/08	JLJ
T		T REF. ADDED	APR 31/08	JLJ



Key Option	Part Number	Description
0	FS1-S01-10E1	No Key
1	FS1-S01-11E1	SATA 'X' Cable
2	FS1-S01-12E1	
3	FS1-S01-13E1	
4	FS1-S01-14E1	SAS Universal Port
5	FS1-S01-15E1	
6	FS1-S01-16E1	
7	FS1-S01-17E1	SATA 'M' Cable
2, 4	FS1-S01-124E1	SAS Out Port
4, 6	FS1-S01-146E1	SAS In Port



- NOTES:
- MATERIAL:
MAIN CAGE: ZINC DIECAST SHELL WITH 150 MICROINCHES OF NICKEL PLATING
EMC GASKET: STAINLESS STEEL
COVER: STAINLESS STEEL
 - ROHS COMPLIANT
 - COMPLIES WITH SFF-8088 EXCEPT WHERE NOTED.

UNLESS OTHERWISE SPECIFIED DIMENSIONS ARE IN MILLIMETERS TOLERANCES ARE:		APPROVALS	DATE	Amphenol Canada Corp.	
DIGITALS	ANGLES	DRAWN	07/NOV/06	TITLE	
X ± 0.25	± 2°	DESIGNED	06/DEC/06	MINI SAS	
.XX ± 0.10		CHECKED		1 DEGREE SINGLE PORT CAGE	
.XXX ± 0.05		ENG. REL. NO.		SCALE	REV
		EAR 123XX		NTS	T
		03554		PROJECT	SFF
				SHEET	1 OF 1

DO NOT SCALE DRAWING

THIS DOCUMENT CONTAINS PROPRIETARY INFORMATION AND SUCH INFORMATION MAY NOT BE DISCLOSED TO OTHERS FOR ANY PURPOSE OR USED FOR MANUFACTURING PURPOSES WITHOUT PERMISSION FROM AMPHENOL CANADA CORP.